



## Installation on Mac OS

Download the drivers from Konica Minoltas homepage:

<https://www.konicaminolta.se/support/download-centre>

Search for **Bizhub C458** & and choose **English as the language** so you can choose your Mac OS Version.

The screenshot shows the Konica Minolta support website interface. At the top, there are two search fields: "Sök produkt:" and "Eller sök steg för steg:". The "Sök produkt:" field contains "bizhub C458" and has a red arrow pointing to it. Below it is a "SÖK >" button. The "Eller sök steg för steg:" field has a dropdown menu showing "A3 Multifunctional Colour" and a sub-dropdown showing "bizhub C458". Below the search fields is a "Drivrutin" section with three dropdown menus: "English", "macOS Sonoma 14", and "Version". Red arrows point to the "English" and "macOS Sonoma 14" dropdowns. Below the dropdowns is a "Printer Driver" table with columns: "Version", "Utgivningsdatum", "Emulering", "Beskrivning", and "Nedladdning". The table contains one row with the following data: "11.9.0A", "Dec 19, 2023", "PostScript", an information icon, and a download icon. Below the table is a "Show all" button. In the top right corner of the "Drivrutin" section, there is a link "Klicka för att stänga".

Download the Installation file

Double click on the DMG-file so that it is opened (Can usually be seen on the Desktop).

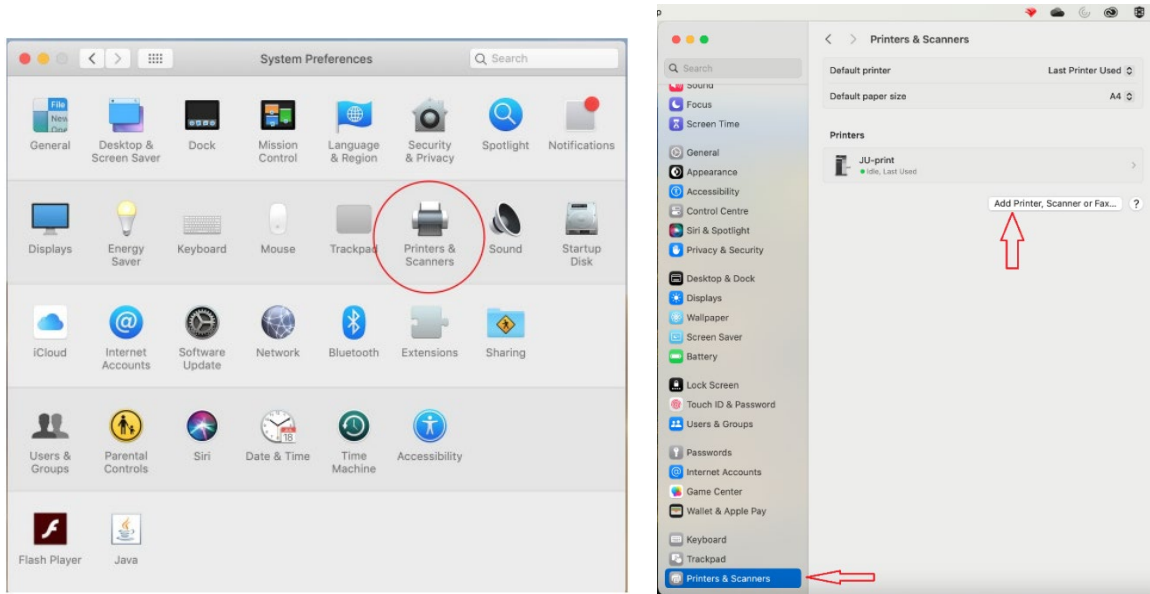
Go in to the folder where you should be able to find the

**C759\_C658\_C368\_C287\_C385I\_109.pkg** file.

Approve the installation with a local user account on the Mac and follow the instructions.

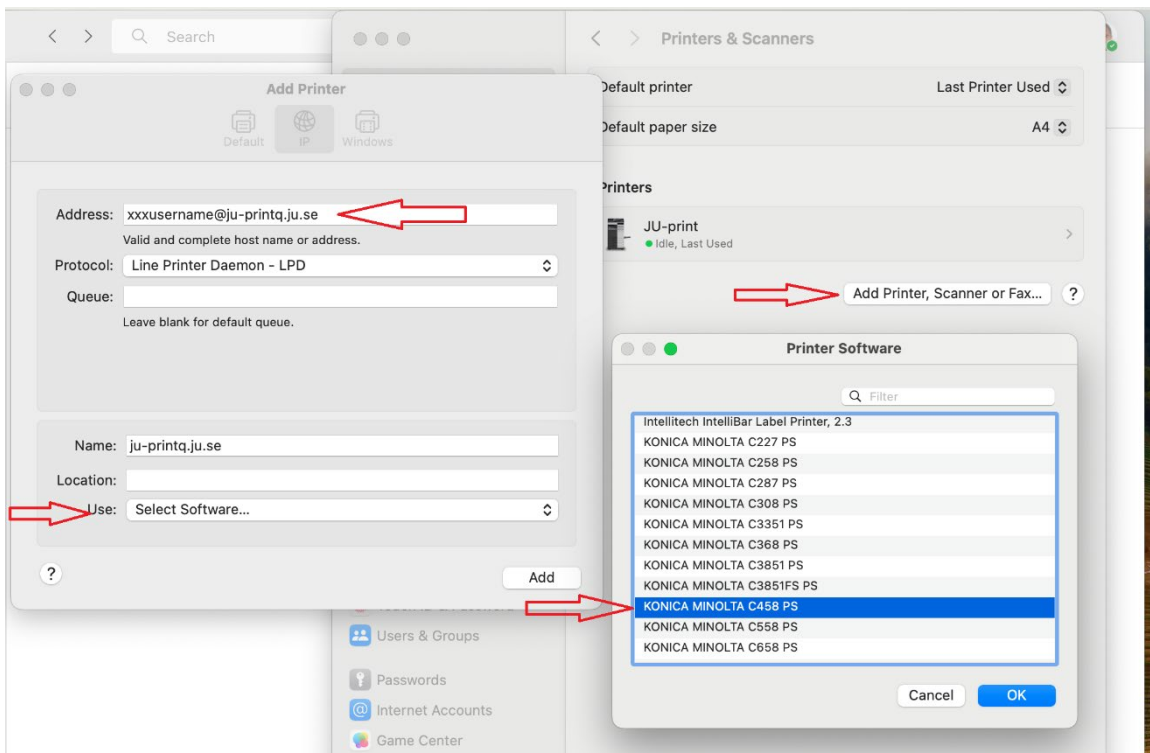
PS: You need to be connected to the Eduroam Wifi to be able to connect to the printers.

Then you can go in to Settings of you Mac and go to Printers and Scanners  
Where you want to add a new printer.



Type in this address with you username - [xxxx24xx@ju-printq.ju.se](mailto:xxxx24xx@ju-printq.ju.se)  
the XXXX24XX is where you type in your username instead.

Protocol "Line Printer Daemon – LPD".

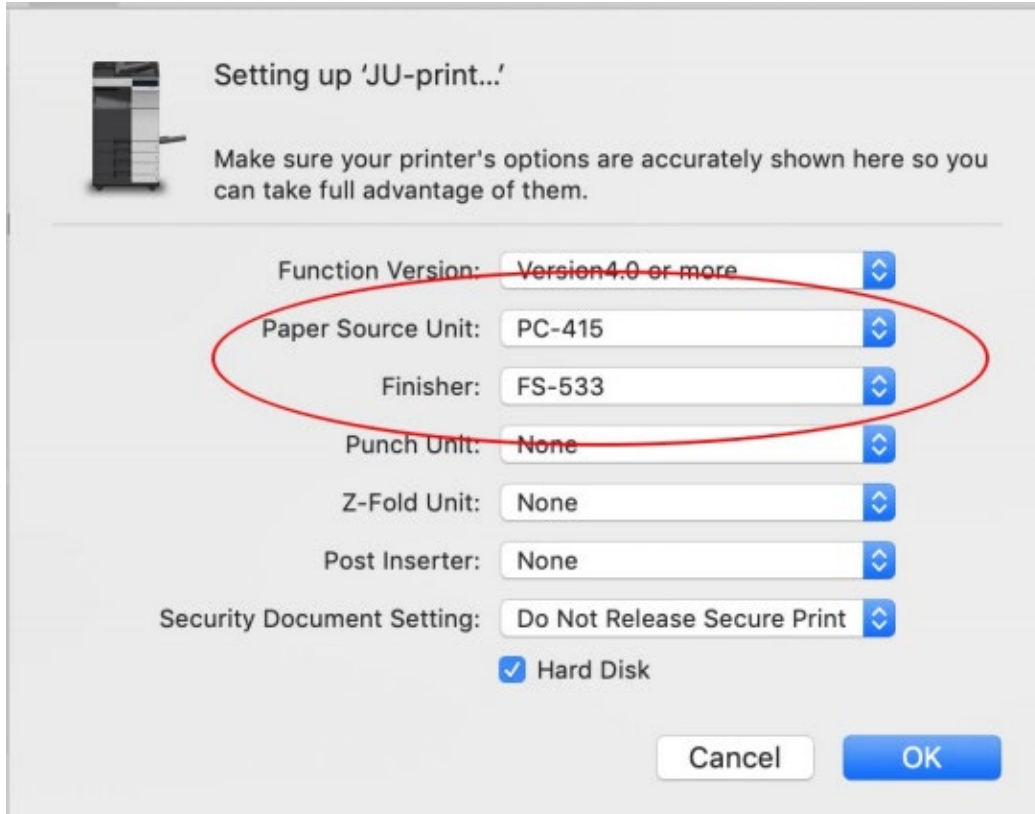


Give the printer a name – JU-printq.ju.se for example.

Then you want to select the Software to be used.

Choose "KONICA MINOLTA C458 PS" in the list and click OK.

Change the **Source Unit PC-415** och **Finisher FS-533**.  
Click OK.



**Setting up 'JU-print...'**

Make sure your printer's options are accurately shown here so you can take full advantage of them.

Function Version: Version 4.0 or more

Paper Source Unit: PC-415

Finisher: FS-533

Punch Unit: None

Z-Fold Unit: None

Post Inserter: None

Security Document Setting: Do Not Release Secure Print

Hard Disk

Cancel OK

And now you should be able to choose this printer when you want to print this machine.